

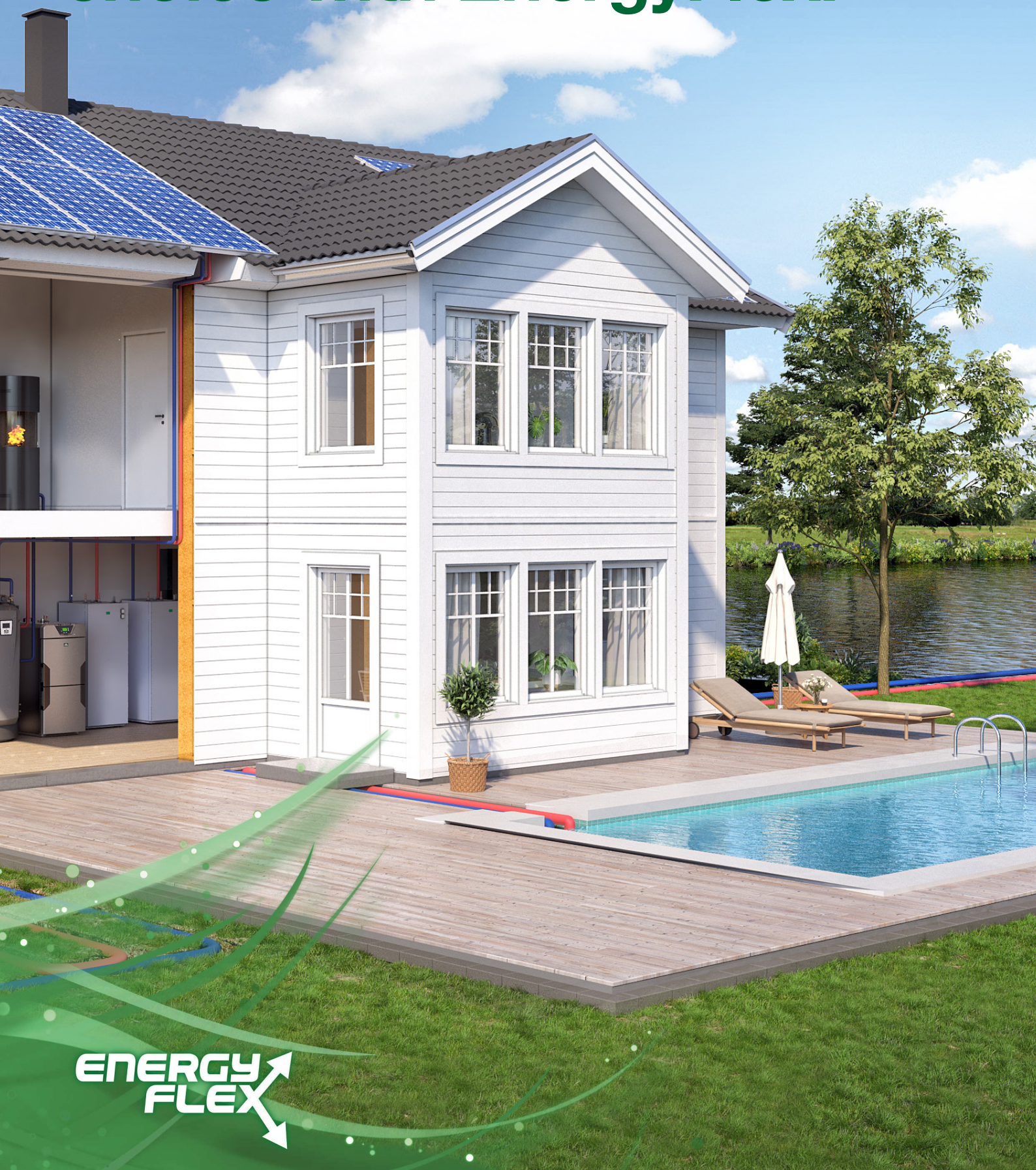


MADE IN SWEDEN



HEAT PUMPS

# Total freedom of choice with EnergyFlex!



ENERGY  
FLEX

# EnergyFlex – only at CTC! Flexible and expandable

EnergyFlex gives you total freedom to easily connect various heat sources in one system – now or in the future.

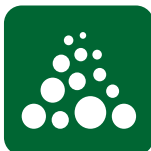


Warm water is produced as it is consumed. The technology provides a continuous supply of fresh, legionella-free hot water.

CTC EcoAir is an air-to-water heat pump for water-borne heating circuits. It works best together with the CTC EcoZenith i360 L/H indoor module with integrated control that produces plenty of hot water.



The speed-controlled CTC GSi ground source heat pump has a smart touchscreen where you easily control the entire heating system, including external heat sources, cooling, pool and anything else included in EnergyFlex.

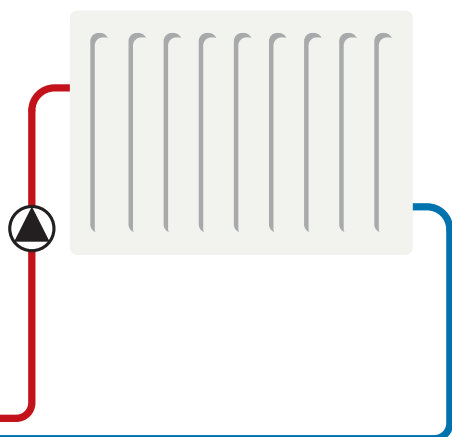


You can connect air-to-water heating, ground source, lake or geothermal heating.

\* This is a schematic diagram to show wiring options – always refer to manuals for installations.



myUplink is our mobile app that allows you to easily monitor and adjust the settings of your heat pump and heating circuit. You can change the desired indoor temperature and the hot water settings and activate holiday mode remotely to save energy and be kinder to the environment.



CTC's heat pumps are suitable for both radiator and underfloor heating systems. You can connect up to two radiator systems or underfloor heating systems. You can also connect our heat pumps to one- or two-pipe systems including older low-temperature systems.

# The foundation of eco-friendly EnergyFlex is the heat pump

The system is based on an eco-friendly, economical and flexible heating circuit consisting of a CTC heat pump. If you then connect to one of our intelligent all-in-one tanks, you are prepared for anything – no matter if it's ground source, geothermal, air, or lake heating.

At CTC we have always believed in flexible systems. That is why you always receive EnergyFlex when you invest in one of our heat pumps.

## Start now – add on later

Start with one heat pump. You can easily connect and supplement your heating system at a later date with virtually anything in terms of heating: solar heating, additional tanks, water-jacketed stoves, as well as boilers running on wood, electricity, pellets and even gas.

## Freedom that doesn't cost extra

Best of all is that this flexibility doesn't cost anything extra. It's included as standard for all of our heat pumps. No hassle or awkward system solutions. All you need to do is connect, control and enjoy. And save money. The common denominator is water-borne heating circuits – radiator systems or underfloor heating.

## Choosing a heat pump

The heat pump that you should choose depends on a number of factors:

- CTC GSi. Speed-controlled heat pumps for ground source, geothermal or lake heating. Built-in control and DHW heating.
- CTC EcoHeat. On/Off heat pumps for ground source, geothermal or lake heating. Built-in shunt control and DHW heating.
- CTC EcoPart. Compact heat pumps for ground source, geothermal or lake heating together with one of our two intelligent indoor modules: CTC EcoZenith i555/i360 or i255.
- CTC EcoAir. Heat pumps for air/water. The pumps are placed outdoors and supplemented with one of our two intelligent indoor modules: CTC EcoZenith i360 or i555.

# Expand your heating system whenever you want.

Connect and supplement your heating system with virtually anything in the way of heating.



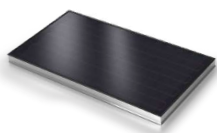


# Future-proof with EnergyFlex

## Some of Europe's most efficient heat pumps

Thanks to being speed-controlled and highly efficient, the CTC GSi 600 series and CTC EcoAir 600M series are some of the best heat pumps in their class. When you choose a heat pump from CTC, not only do you get a Swedish-made quality pump, but also much greater freedom to choose a heat source in the future thanks to EnergyFlex being built in. When you invest in a heat pump from CTC, you can rest assured knowing that you are installing one of the most reliable and long-lasting heat pumps on the market. Development and manufacture take place in our factory in Ljungby, Sweden, where consideration for quality and innovation go hand in hand.

A CTC system is built to provide you with heat and peace of mind for many years.



Solar panels



Heated pool



Pellet boiler



Stove



Wood boiler



Indoor module



# Start now – add on later

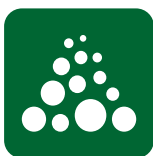
CTC's technology enables you to supplement the heat pump with different types of boilers, solar panels, pool heating, cooling, extra hot water storage tanks and more. It all forms a heating circuit that can be controlled by you from a single place.

**You control the entire system via a 4.3 inch colour touchscreen. It has simple symbols and you can choose the language. The most important functions:**

- Monitors all heat pump functions.
- Allows for customised settings.
- Displays desired values, e.g. temperatures, operation times, energy consumption, and error alerts in a simple and structured way. This makes adjusting settings and troubleshooting easier.



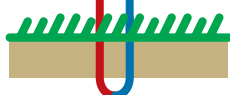
CTC EcoAir is an air-to-water heat pump that connects to a hot water storage tank or indoor module for a water-borne system. It works best together with the CTC EcoZenith i360 L/H indoor module with integrated control that produces plenty of hot water.

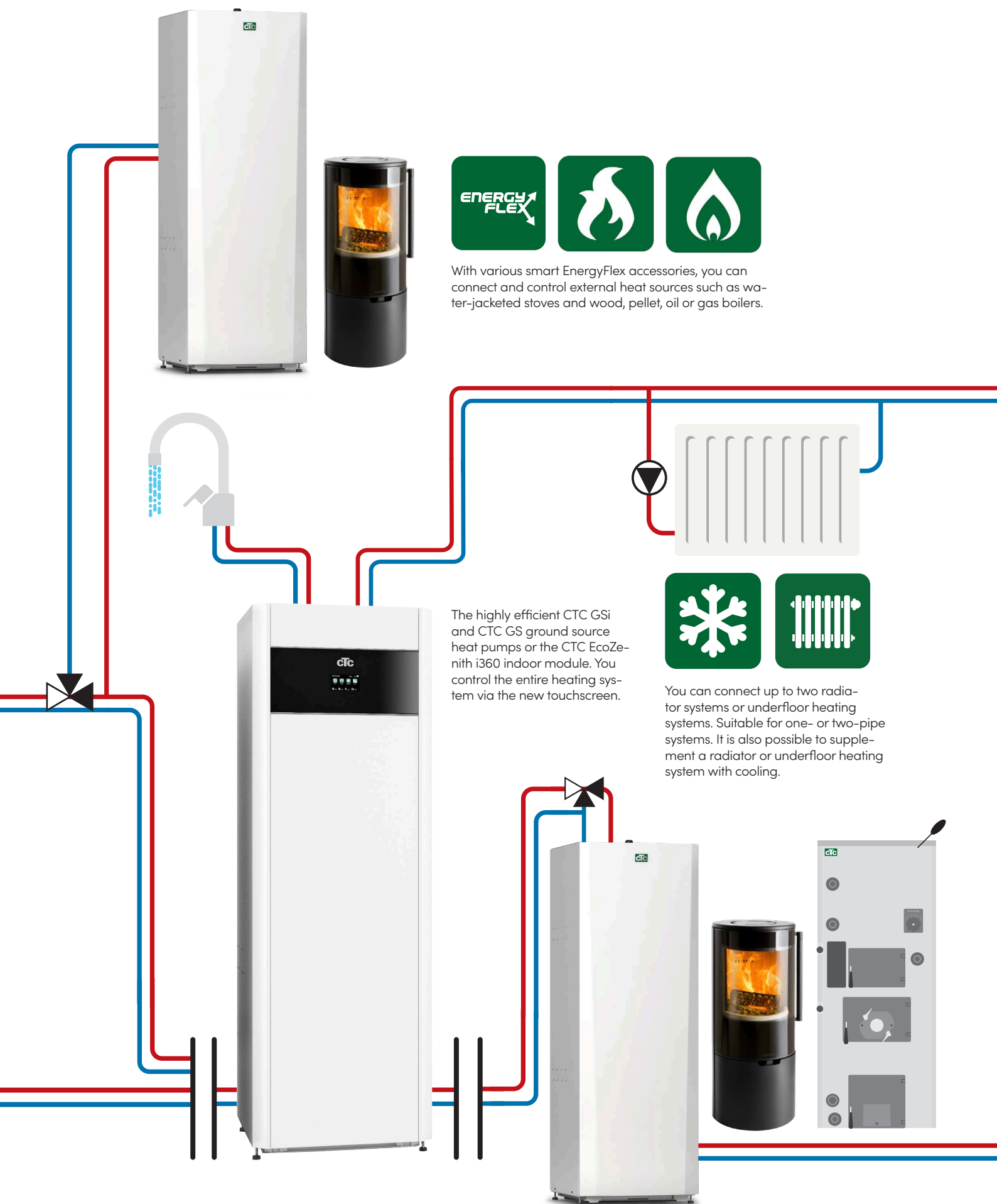


Choose whether to connect to ground source, geothermal or lake heating. Then choose between CTC GSi/GS or CTC EcoPart (with or without integrated control and DHW heating). CTC EcoPart can instead be complemented with a CTC EcoZenith i360 L/H indoor module with integrated control and DHW heating.



With the CTC EcoComfort accessory, you get pleasant cooling in the summer as it utilises the cool temperature of the bedrock/collector. Applies to all ground source heat pumps from CTC.





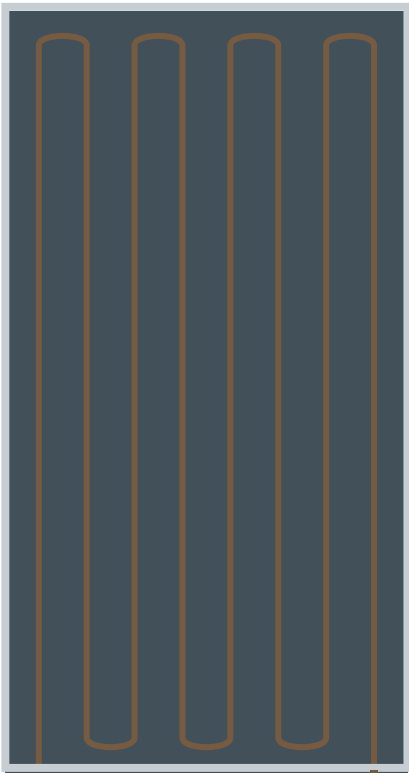
\* This is a schematic diagram to show wiring options - always refer to manuals for installations.



With CTC's heat pumps, owning a pool becomes simpler and cheaper. The pool is easily connected to CTC's heat pumps via a pool exchanger and smart accessories from CTC.



◀ With various smart EnergyFlex accessories, you can connect and control external heat sources such as water-jacketed stoves, solar collectors and wood, pellet, oil or gas boilers.



Connect and control solar panels with the CTC EcoZenith i360 indoor module or the CTC GSi or CTC GS ground source heat pumps.



# A safe investment!

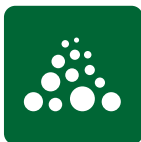
With CTC, you can rest assured knowing that you are installing one of the most reliable heat pumps on the market.

Our product categories:



## Ground source heat pumps

With a ground source heat pump from CTC, you can save up to 85% on your heating costs. A ground source heat pump utilises solar energy stored in bedrock. The energy utilised is free, environmentally friendly and contributes to reduced CO<sub>2</sub> emissions.



## Lake and geothermal heat pumps

To reach this energy resource, a liquid-filled collector hose measuring 300-500 metres is laid in the ground or in a lake. The circulating liquid in the hose is heated by the stored solar energy. The liquid passes through the heat pump where a compressor raises the temperature by means of a refrigerant and a heat exchanger in a closed system.



## Air-to-water heat pumps

With an air-to-water heat pump from CTC, you save up to 75% on your heating costs. An air-to-water heat pump converts energy in the air into heat and hot water. And because it does not require boreholes or coils in the ground, it is easy to install. The energy utilised is free, environmentally friendly and contributes to reduced CO<sub>2</sub> emissions.



## Ventilation solutions

Fresh air indoors is important for our health. The ventilation in your home has the task of venting away impurities and moisture in the house and adding fresh air. It is also important to minimise annoying noise in your home. CTC offers a concept for homes with exhaust air heating.



## Indoor modules

All indoor modules from CTC are equipped with a unique control system which is used to calculate the heating requirements of your home. The control system makes sure that the heat pump works efficiently and that the right amount of heat and hot water is produced. The control system is accessed via a user-friendly touchscreen.



## Hot water heaters

At CTC we have developed our own method for ensuring that our products have the longest possible life span. We only use high-quality stainless steel, which is a sustainable and durable material. By using superior materials in combination with a unique manufacturing process, the risk of corrosion is reduced.

# EnergyFlex with CTC EcoHeat or CTC EcoZenith i255

**You control the entire system via a 4.3 inch colour touchscreen. It has simple symbols and you can choose the language. The most important functions:**

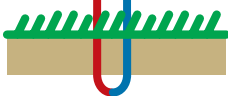
- Monitors all heat pump functions.
- Allows for customised settings.
- Displays desired values, e.g. temperatures, operation times, energy consumption, and error alerts in a simple and structured way. This makes adjusting settings and troubleshooting easier.



CTC EcoAir is an air-to-water heat pump that connects to a hot water storage tank or indoor module for a water-borne system. It works best together with the CTC EcoZenith i360 L/H indoor module with integrated control that produces plenty of hot water.



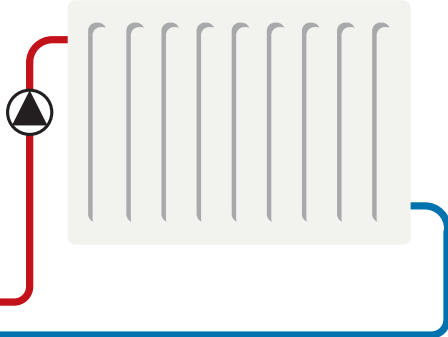
With the CTC EcoComfort accessory you get pleasant cooling in the summer as it utilises the cool temperature of the bedrock/collector. Applies to all ground source heat pumps from CTC.



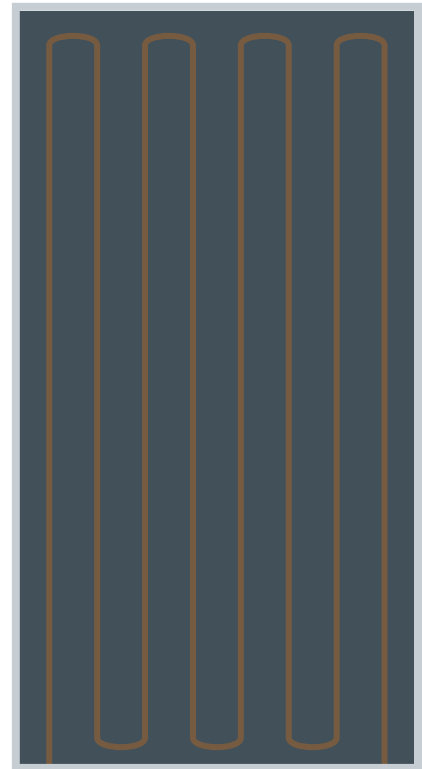
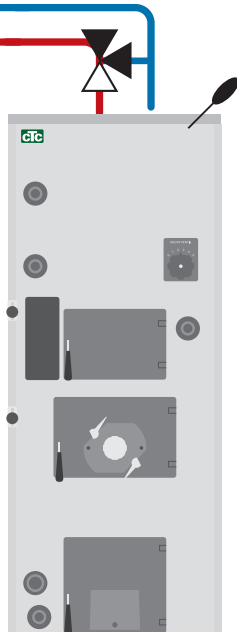
\* This is a schematic diagram to show wiring options – always refer to manuals for installations.



You can connect up to two radiator systems or underfloor heating systems. Suitable for one- or two-pipe systems. It is also possible to supplement a radiator or underfloor heating system with cooling.



With various smart EnergyFlex accessories, you can connect and control external heat sources such as water-jacketed stoves, solar collectors and wood, pellet, oil or gas boilers.



With CTC's heat pumps, owning a pool becomes simpler and cheaper. The pool is easily connected to CTC's heat pumps via a pool exchanger and smart accessories from CTC.



# CTC EcoZenith i555 Pro

## – everything you want plus a little more

CTC EcoZenith i555 Pro is an extraordinary and innovative technical solution – an all-in-one tank with built-in intelligence. EnergyFlex at its best.



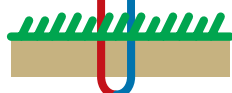
Unbeatable DHW capacity of more than 500 litres as standard. Fresh, legionella-free DHW at all times. An external DHW heater can also be connected. Provides more DHW and increased DHW capacity.



Would you prefer a heat pump for air/water or a heat pump for ground source, geothermal, or lake heating? Choose and combine up to three heat pumps. The smart control equalises the operation time between the heat pumps so as to maximise heat output and minimise the load.

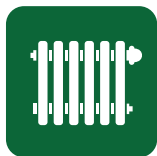


With the CTC EcoComfort accessory you get pleasant cooling in the summer as it utilises the cool temperature of the bedrock/collector. Applies to all ground source heat pumps from CTC.

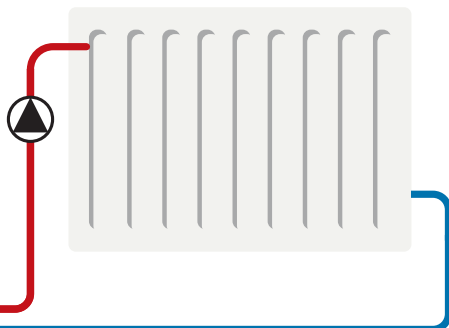


A tank in excess of 500 litres with DHW heating, integrated solar coils, built-in control for additional heat sources and much, much more.

\* This is a schematic diagram to show wiring options – always refer to manuals for installations.



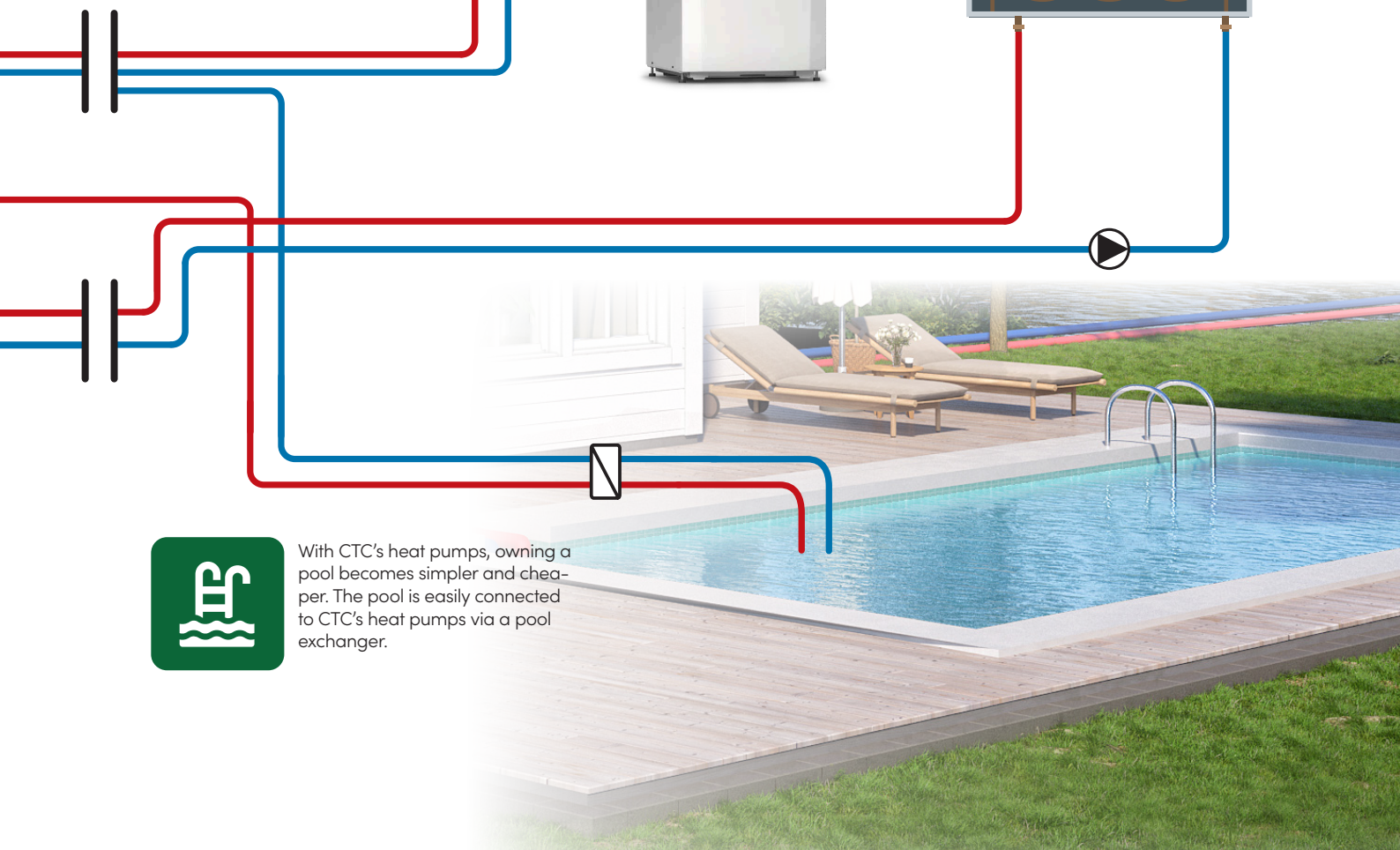
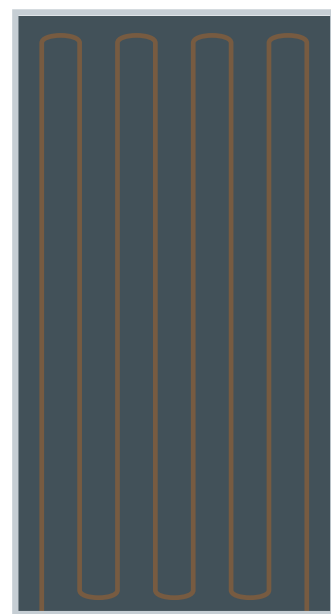
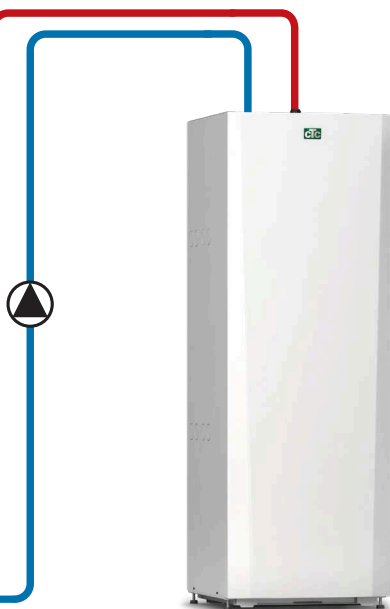
You can connect up to two radiator systems or underfloor heating systems. Suitable for one- or two-pipe systems. It is also possible to supplement a radiator or underfloor heating system with cooling.



Use solar energy to recharge the bedrock (the collector). Connect up to three solar panels without an additional buffer tank. With an additional buffer tank, it is possible to connect two more solar panels.



Connect and control external heat sources such as water-jacketed stoves and wood, pellet, oil or gas boilers.



With CTC's heat pumps, owning a pool becomes simpler and cheaper. The pool is easily connected to CTC's heat pumps via a pool exchanger.



### 100 years as a heating pioneer

No other manufacturer can offer EnergyFlex, which gives you the freedom to connect to other heat sources, pools and tanks simply and cost-effectively within a single system.

But it takes more: a vast, wide range of efficient heat pumps, intelligent tanks, accessories and control systems that allow you to achieve even, comfortable heating in smaller houses as well as larger properties. In our 100-year history, we have been heat pioneers in many different areas, with EnergyFlex as one of our best examples. It is therefore no exaggeration to say that we have developed the industry.

# ctc

## HEAT PUMPS

[www.ctc-heating.com](http://www.ctc-heating.com)

CTC AB, Box 309, SE-341 29 Ljungby, Sweden.  
+46 372 88 000 – [info@ctc.se](mailto:info@ctc.se) – [www.ctc-heating.com](http://www.ctc-heating.com)